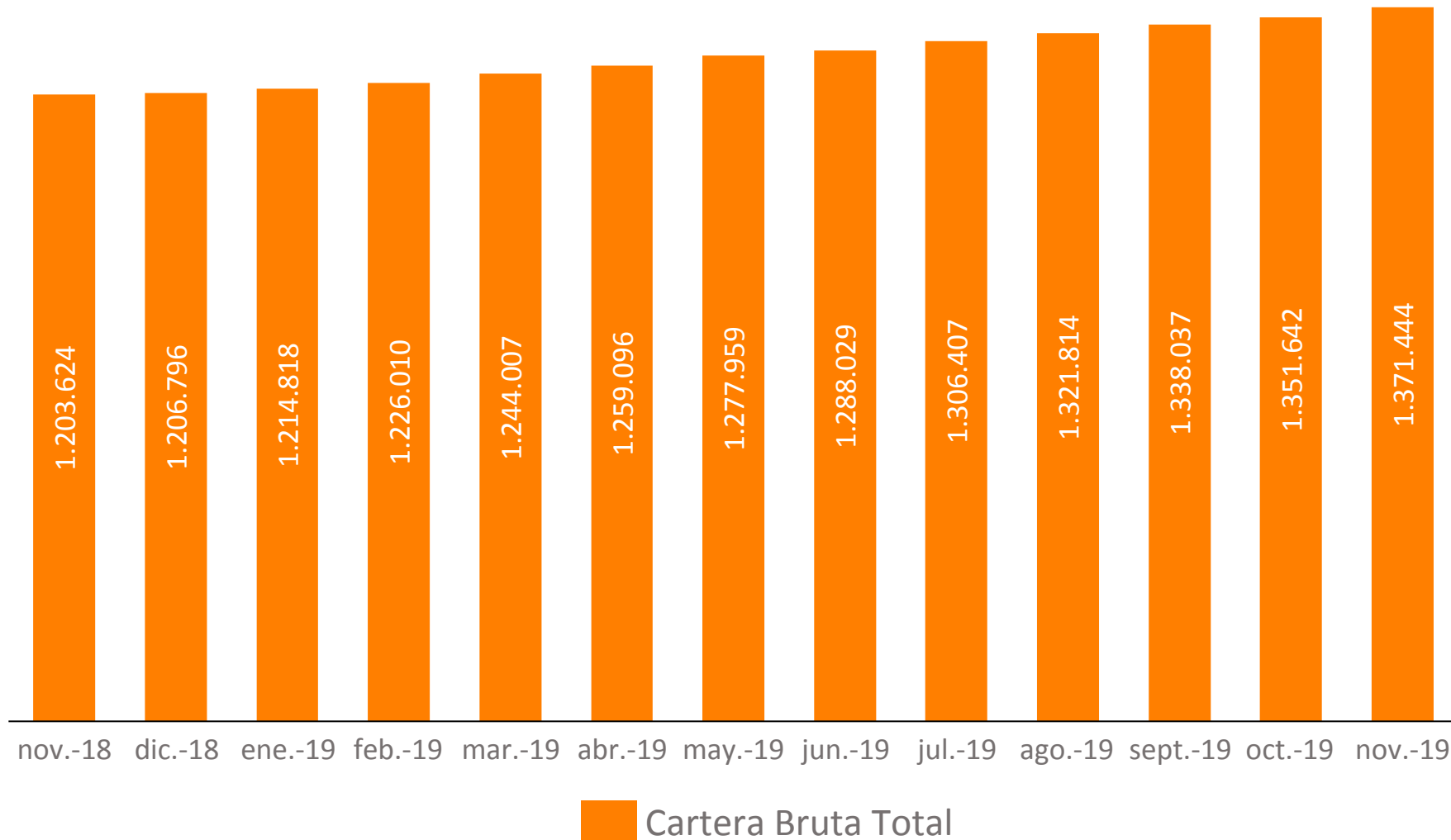


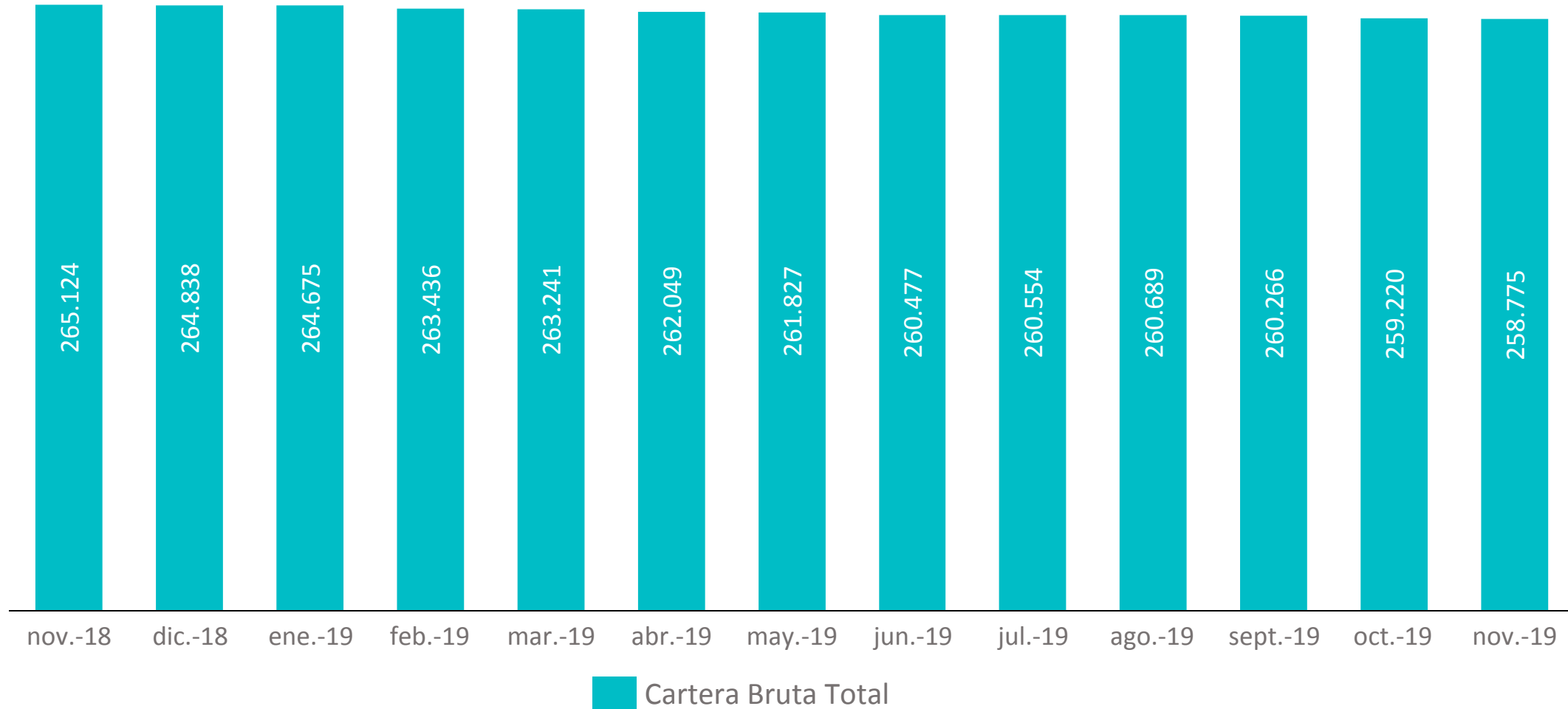
# **CIFRAS RELEVANTES** NOVIEMBRE DE 2019

Diciembre, 2019

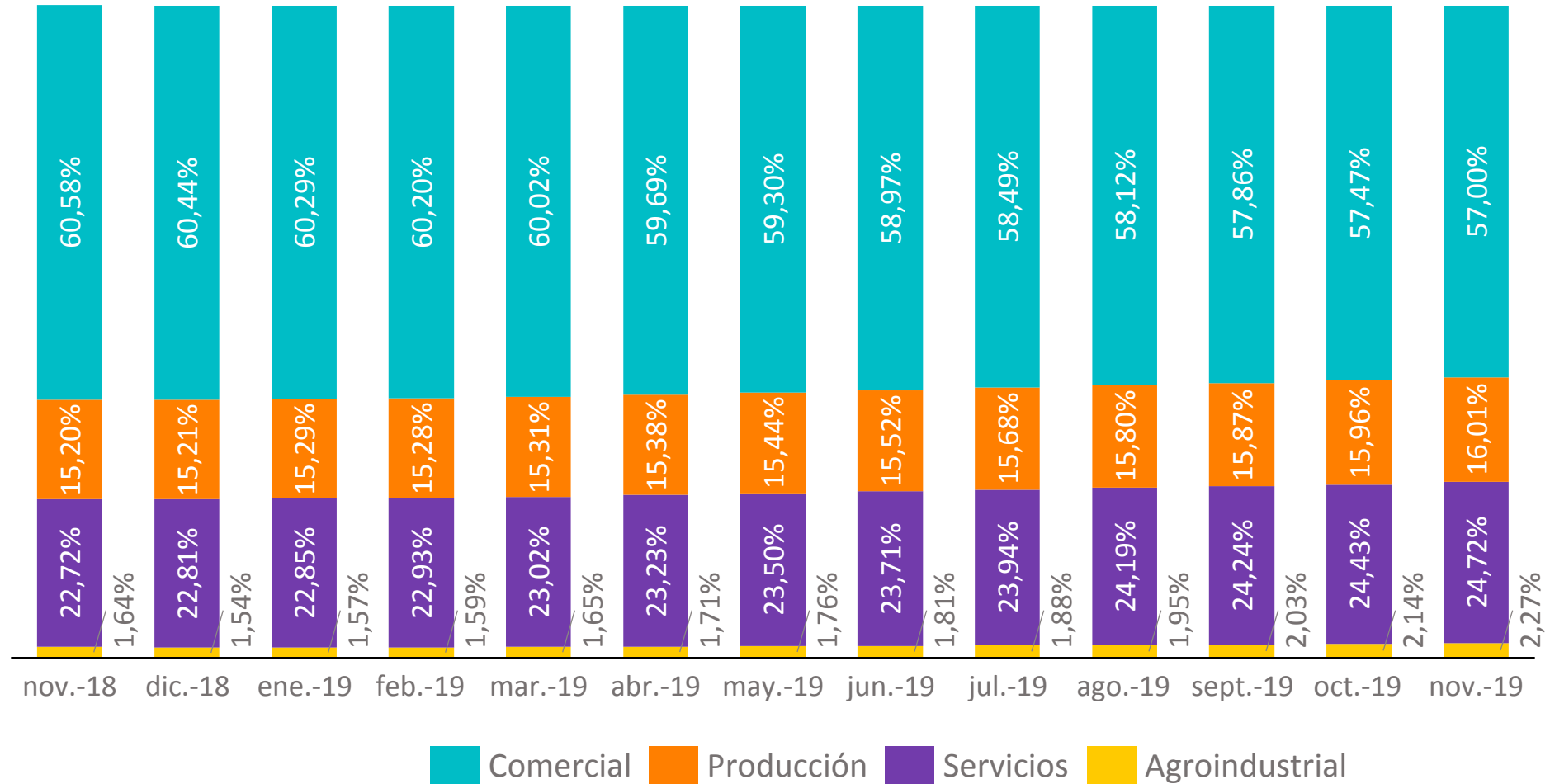
# Saldo cartera bruta total



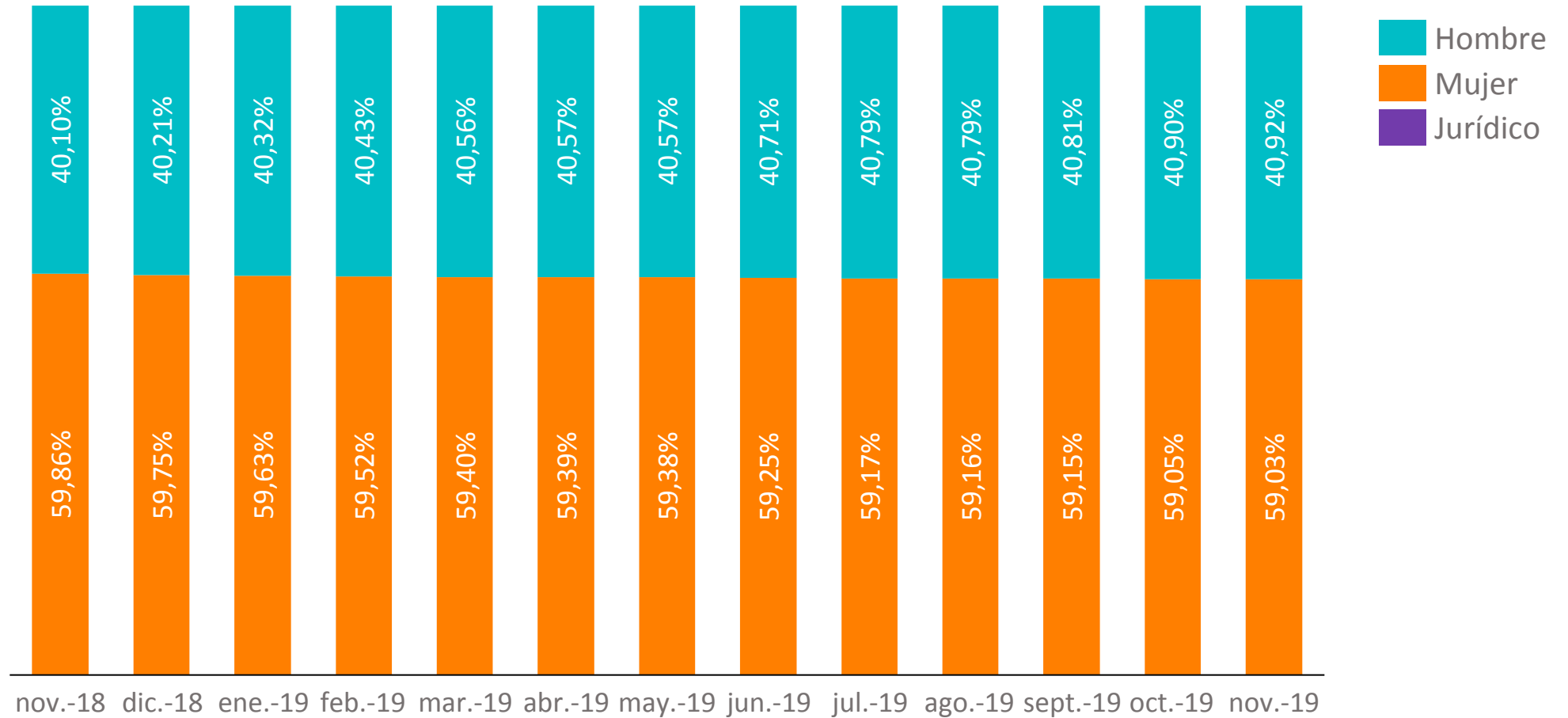
# Número de créditos totales



# Cartera total por sector económico

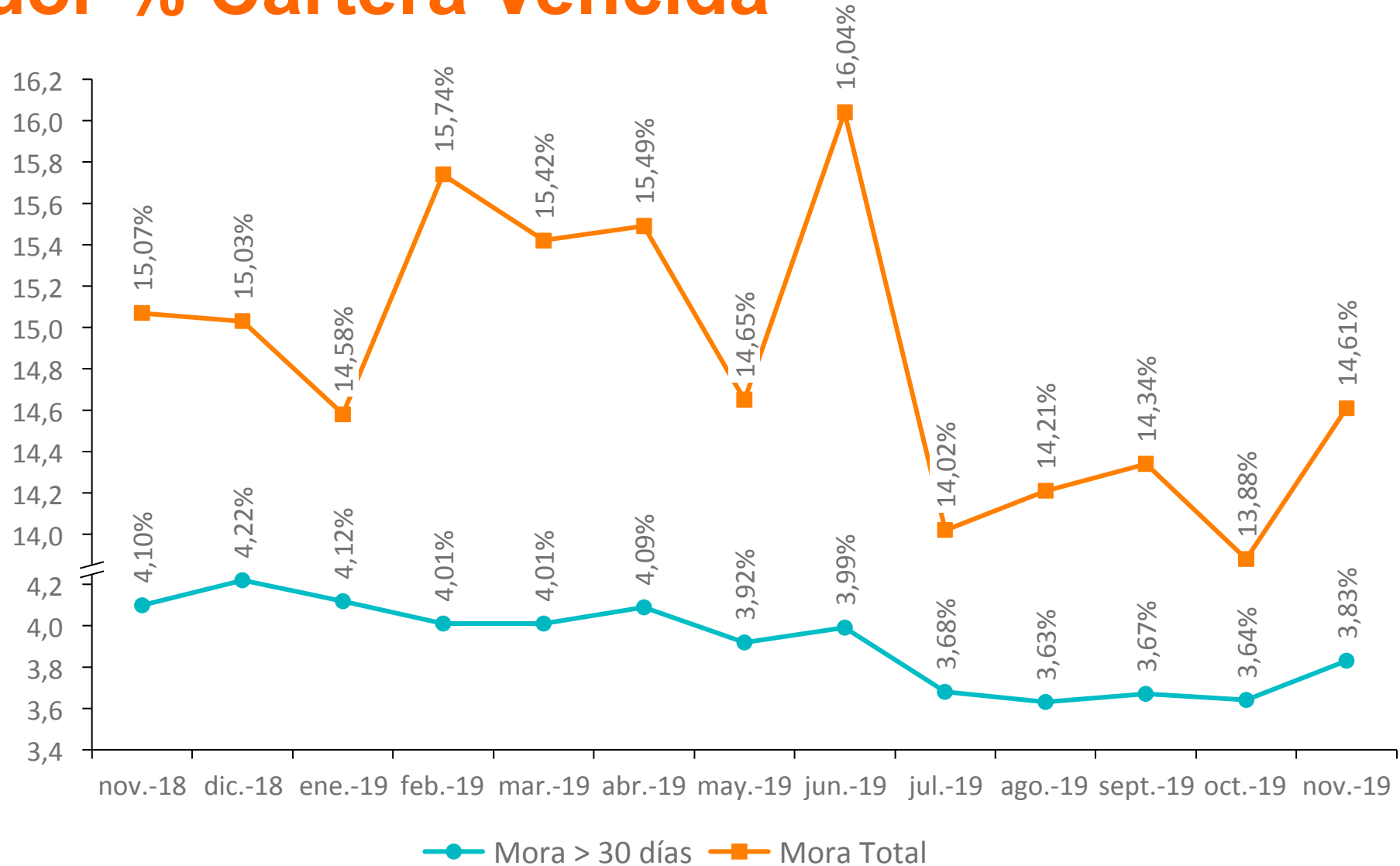


# Cartera por genero

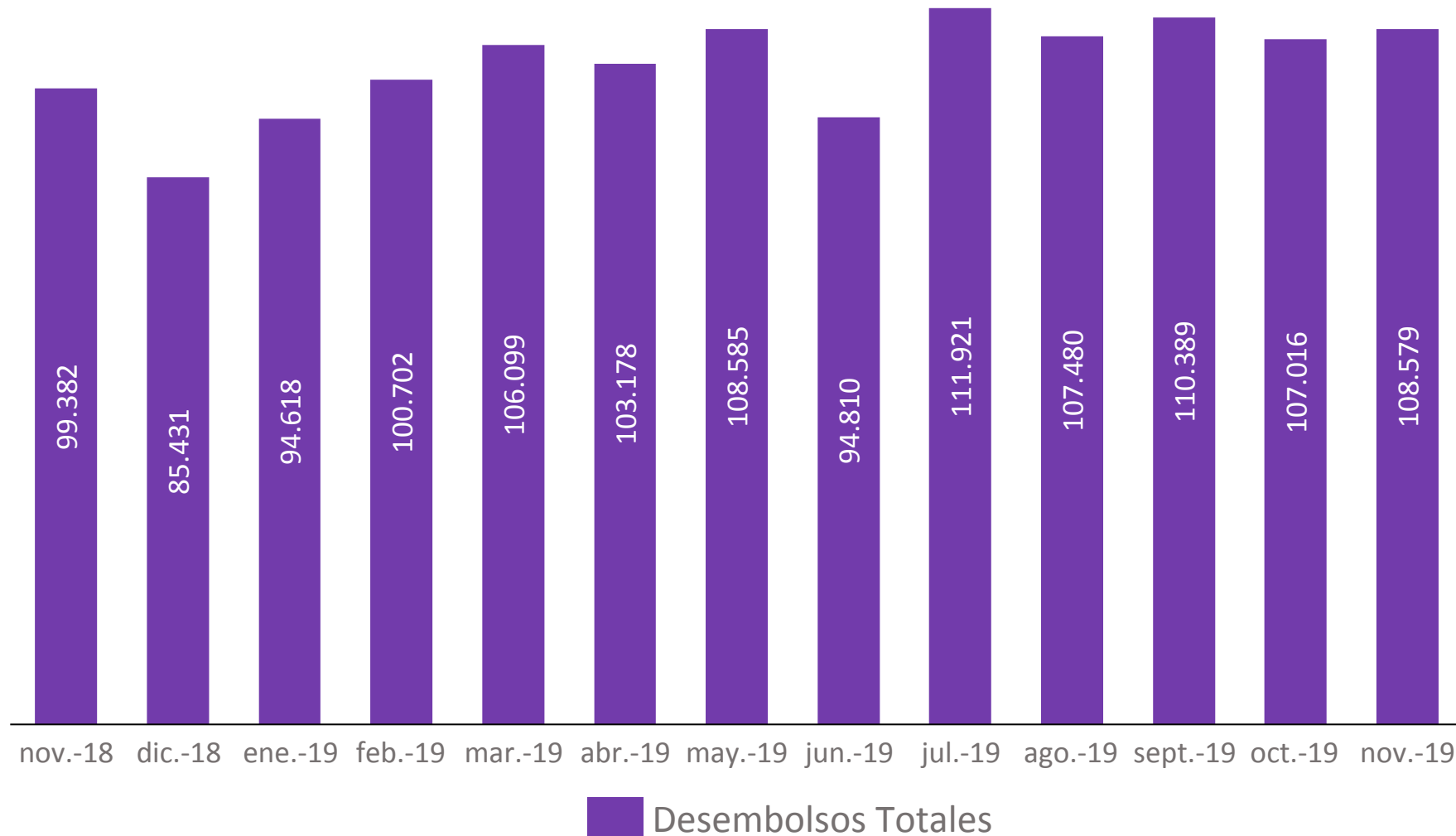


Participación %	nov-18	dic-18	ene-19	feb-19	mar-19	abr-19	may-19	jun-19	jul-19	ago-19	sep-19	oct-19	nov-19
Hombre	40.10%	40.21%	40.32%	40.43%	40.56%	40.57%	40.57%	40.71%	40.79%	40.79%	40.81%	40.90%	40.92%
Mujer	59.86%	59.75%	59.63%	59.52%	59.40%	59.39%	59.38%	59.25%	59.17%	59.16%	59.15%	59.05%	59.03%
Jurídico	0.04%	0.04%	0.05%	0.05%	0.05%	0.05%	0.05%	0.05%	0.05%	0.05%	0.04%	0.05%	0.05%

# Indicador % Cartera Vencida



# Desembolsos totales



# Número de desembolsos totales

